

For us *better*, in its many forms, is a goal and a process.

This publication features images of our Sydney team in some of our notable projects. Our goal is to attract and inspire the best people and this features a handful of them.

We hope that you will see some familiar faces and recognise people who were there to guide, listen, assist and inform you.

Mark Beattie (National Managing Director), Ian Jackson (NSW Regional Chairman), Alec Horley (NSW Founding Director) >
East Circular Quay, Sydney



This is the story of a professional and civic evolution.



Davis Langdon is celebrating its Silver Anniversary in Australia's most exciting and challenging property market.

In this time, we have developed and confirmed our position as a market leader in the provision of a broad range of management and consulting services to the construction, infrastructure and property industries. The company has evolved from a Quantity Surveying firm to a truly multi-disciplinary construction and property practice.

From 1982 to 2007, we have helped change the face, perceptions and possibilities of Sydney. We have helped create, manage and develop buildings where people live, work, learn and play.

In the 25 year period, we have also witnessed Sydney's transformation from an Australian wonder to one of the world's most enviable addresses.





W

Deutsche Bank

MULPI

GRESHAM

AMP

AMP



There to guide, listen, assist and inform you

Andrew Doherty
Associate

Our extensive operating experience in this market has seen us work on major healthcare projects, world-class sports and entertainment infrastructure, centres of learning excellence, corporate headquarters and everything in between.

These are high impact public and private spaces that engage, entertain, heal and transform the lives of their occupiers.

This connection with people is at the forefront of our thinking.

Through our 25 years in Sydney we have actively sought a unique outcome for all of our property projects. We have developed more innovative places, safer structures and healthier buildings for people to live their lives in.

For us *better*, in its many forms, is a goal and a process.



PROJECT Amora Hotel

LOCATION 11 Jamison Street, Sydney

SECTOR Leisure

Establishment

1982 to 1987

We entered the Sydney market on the twin platform of local knowledge and global presence.

Davis Langdon had its origins in Australia with the Melbourne firm, Beattie Prowse. This boutique practice held an esteemed position in the local market and was notable for its industry profile, expertise and desire for growth.

When this was combined with Davis Langdon's global position and international networks, there was a strong foundation to gain a foothold in the Sydney market.

From these days, we were aware of the immense possibilities that this city held for us. Our approach was purposeful, focused and rigorous as we knew we had to earn the respect of this city.



Norana Chui, Cost Manager

Bull Building, 124 Walker Street, North Sydney

PROJECT Sydney Eye Hospital

LOCATION 8 Macquarie Street, Sydney

SECTOR Healthcare



Peter Osborne
Associate

Twin platforms of local knowledge and global presence

Our goal is to attract and inspire the best people

Charles Slack-Smith
Senior Building Surveyor

Establishment

1982 to 1987

With a hunger and energy to take on some of the more established firms in the market, there was a resolve and determination to our early years. At this stage of our operation we had the single offering of Quantity Surveying and we worked hard to perfect and market this.

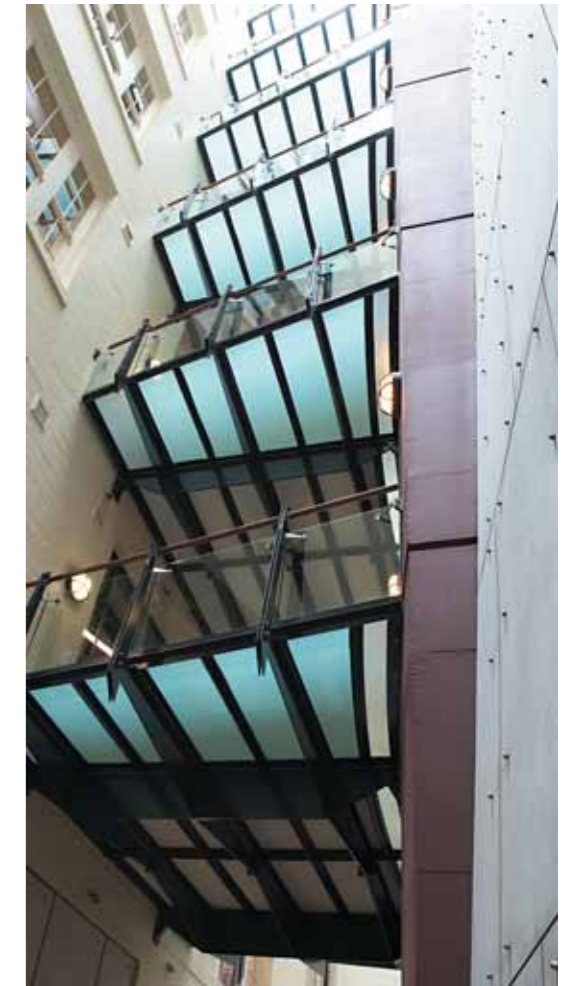
The years were notable for our achievements in healthcare – an area that is a key sector of the practice to this day.

Through this period we also established many of our cherished long-term relationships and alliances.

In the years that we found ourselves, we also found some of you.

We learnt the lessons that are with us today - be faithful to your market, respond to its challenges and act with integrity.

We were on our way.



PROJECT Bushells Building

LOCATION 121-127 Harrington Street, Sydney

SECTOR Commercial

Building a presence 1988 to 1992

Our next period of growth reflected the difficult, yet dynamic, economic times. Sydney shared these challenges and found a path for growth through a recession. We knew we could follow her lead.

With the challenge, came the opportunity. We found new methods of practice, opened new markets and diversified our offer. It was a time for shifting visions, deeper insights and need to push our gaze beyond the immediate.

The period also reflected some of the broader shifts that were changing our industry. Governments were increasingly demanding quality assurance and were not just happy to trust the outcomes.

We developed new modes of practice to answer this call and as a result became a more diversified company than most Australian practitioners.



PROJECT Global Switch Building

LOCATION 400 Harris Street, Sydney

SECTOR Commercial



Andy Lappas
Associate

More innovative, safer and healthier buildings

Helping you reach for the sky

Peter Smith
Associate

Building a presence

1988 to 1992

The years 1988 to 1992, also saw a strengthening of the links with our global parent and the business saw the potential of the burgeoning Asian tiger economies. This was followed by a move into the broader Asian-Pacific region.

From these days, we knew that our futures were inextricably linked.

We were finding our niche in Australia and beyond.



PROJECT Concord Hospital

LOCATION Hospital Road, Concord

SECTOR Healthcare

Creating the World Stage

1992 to 2000

As with the other earlier periods in our history, our growth and direction reflected the market. The countless infrastructure projects that the Olympic Games generated were a boon for this city and Davis Langdon.

Talk about faster, higher and stronger. It could well have been our motto in the year's 1992 to 2000.

We worked on many of the major projects, including Telstra Stadium, Acer Arena and the infrastructure at the Homebush site. These sites became jewels for the city, sacred ground for participants and the cheering station for a global audience.

Sydney sparkled for the Games and we were delighted to have played a part.



PROJECT Hockey Centre

LOCATION Sydney Olympic Park, Homebush

SECTOR Leisure



Michael Manikas
Senior Cost Manager

Faster, higher and stronger



Our approach is purposeful, focused and rigorous

Alan Bailey
Senior Cost Manager

Creating the World Stage

1992 to 2000

This period was also notable in the shifting demographics of Sydney. More than ever people wanted to live with and near Sydney's jewels – the harbour and bustling city. There was a massive jump in inner-city apartments and this became an important sector of our business.

Once again, this is an example of how our business changes when the market shifts.

To service our client's growing expectations and needs, we also increased our own offer. We developed the diversified streams of Building Surveying, Project Management and Quality Management to complement our work in Quantity Surveying.

As the decade came to a close, we had begun to see the results of our earlier labour. Davis Langdon's name was now synonymous with excellence in the fields of property and construction and we were a major player in Australia's biggest property market.

We looked into the early years of the new millennium with pride, assurance and an increasing desire to find new modes of practice and new sectors of activity.



PROJECT Sydney Convention and Exhibition Centre

LOCATION Darling Drive, Darling Harbour

SECTOR Leisure

New opportunities and new challenges

2000 to 2006

While our core aim of providing an integrated service remains the same, the current environmental and legislative issues are new challenges. The terms sustainability, carbon emission and green design were not active 25 years ago, but today they are at the forefront of our profession.

The integration of the built environment and the natural system is our greatest challenge and one that will take us to the limits of our thinking. We will need to respond with innovative strategies and a heightened degree of co-operation and interdependence.



PROJECT Deutsche Bank Place

LOCATION 126 Phillip Street, Sydney

SECTOR Commercial



Andrew Murray
Project Manager

We help create the corridors of power...



Responding to tomorrow with sustainable solutions

David Lambert
Associate

New opportunities and new challenges 2000 to 2006

Sustainability is a shared issue that we hope to provide leadership and guidance on.

We tackle these issues with great people – our greatest strength and your resource. Davis Langdon will continue to seek and develop the best people so they contribute to your projects in a positive way.

This commitment to human capital is also seen in our work in research and industry development.

Davis Langdon is committed to our industry, our people and our environment.



PROJECT Optus Centre

LOCATION North Ryde

SECTOR Commercial

Reaching for the sky

2007...

The very fundamental aim of making things better – that simple, but far-reaching goal – still excites us.

It's a process that suggests a constant state of improvement and a search for superior outcomes. It echoes the past, but the intent is firmly rooted in the future.

This fuels us, and we hope will fuel our next 25 years of growth in Sydney.

The Board, Management and Staff of the Davis Langdon Sydney Office thank you for letting us make your projects better.

Here's to 25 more years of working, talking, learning, creating and developing together.



Directors

Mark Beattie
(National Managing Director)

NSW/ACT Region

Ian Jackson (Regional Chairman)
Eric Bailey
Gary Boyd
Brett Clabburn
David Hartigan
Alec Horley
Alan Jenkins
Mike Still

Southern Region

Bob Hunt (Regional Chairman)
Mark Bray
John Edwards
Leon Gardiner
John Grimbos
Chris Hemphill
Nick Jokity
Ramsay McKay
Gernot Schubert
Andrew Southin
Craig Westblade
Lee Williams

Queensland Region

Malcolm Butcher (Regional Chairman)
Brad Jackson
John Pemble-Smith
Phil Plant

Western/Central Region

Ian Silver (Regional Chairman)
Chris Sale

Sydney Office Staff

Vasili Alembakis
Carolyne Alker
Ian Anderson
Mark Ashworth
Philip Atkin
Alan Bailey
Shane Berry
Suzette Brandner
Joe Brennan
Robert Briant
Trevor Burrows
Andrew Caponas
Phil Carleton
Norana Chui
Anabel Clavel
Warren Cornor
Franca DiDonato
Dennis Dinse
Andrew Doherty
Terri Elphick
David Finch
Camille Gagan
Tony Galloway
Warren Gibson
Mike Gooley
William Hamlyn-Harris
Jill Heyworth
Kevin James
Matthew Jones

Justin Jones-Gardiner
Maritta Krohnke
Roger Lai
Calvin Lam
David Lambert
Andy Lappas
Karl Lavery
Robert Lee
Geoff Letherbarrow
Cindy McNabb
Michael Manikas
Andrew Murray
Elliot Newton
Peter Osborne
Corinne Ries
Bruno Scenna
Paul Schenko
Charles Slack-Smith
Erica Smith
Peter Smith
Iwan Stecher
Abe Strbik
Trudi Tuckwell
Kent Yuen



Our offices

Australasia

Australia	Adelaide
	Brisbane
	Cairns
	Canberra
	Darwin
	Hobart
	Melbourne
	Perth
	Sunshine Coast
	Sydney
	Townsville

New Zealand	Auckland
	Christchurch
	Wellington

International

Continent	Country	City
Asia	Brunei	Bandar Seri Begawan
	China	Kuala Belait
		Beijing
		Chongqing
		Guangzhou
		Hong Kong
		Macau
	India	Shanghai
		Shenzhen
		Bangalore
		Hyderabad
		Mumbai
	Indonesia	Bali
	Japan	Jakarta
		Tokyo
	Malaysia	Nagoya Aichi
		Korea Seoul
		Johor Bahru
	Philippines	Kota Kinabalu
Kuala Lumpur		
Penang		
Manila		
Singapore		
Thailand		Bangkok
Vietnam	Hanoi	
	Ho Chi Minh City	
Africa	Botswana	Gaborone
	South Africa	Bloemfontein
		Cape Town
		Durban
		George
		Johannesburg
		Klerksdorp
		Nelspruit
		Pietermaritzburg
		Port Shepstone
		Pretoria
		Richards Bay
		Somerset West
		Stellenbosch
		Tygerberg
		Vanderbijlpark
Europe	Russia	Moscow
	Spain	Barcelona
		Girona

Continent	Country	City
Middle East	Arabian Gulf	Bahrain
		Dubai
		Qatar
	Egypt	Cairo
		Lebanon
United Kingdom	England	Birmingham
		Bristol
		Cambridge
		Leeds
		Liverpool
		London
		Maidstone
		Manchester
		Milton Keynes
		Norwich
		Oxford
		Peterborough
		Plymouth
		Southampton
		Stevenage
		Ireland
Dublin		
Scotland	Galway	
	Limerick	
	Edinburgh	
Wales	Glasgow	
	Cardiff	
America	USA	Boston
		New York
		Philadelphia
		Sacramento
		San Francisco
		Santa Monica
		Seattle
		Vergennes

Davis Langdon
is committed to
our industry,
our people and
our environment.

This publication was produced by Nose To Tail. We thank the Management and Staff of Davis Langdon for their openness, trust and support to develop this project.
www.nosetotail.com.au

DAVIS LANGDON



Level 5
100 Pacific Highway
North Sydney NSW 2060

Tel: +61 2 9956 8822
Fax: +61 2 9956 8848
www.davislangdon.com
syd@davislangdon.com.au